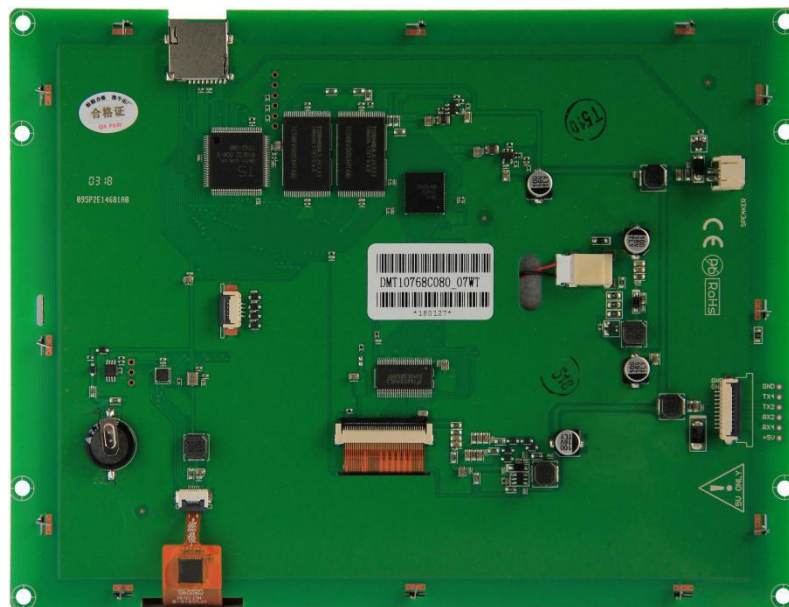


T10768C080_07WN

T10768C080_07WT

8.0 Inches, 1024xRGBx768, 65K Colors, DGUS LCM (DGUS II)



Record of Revision

Revise Date	Content
2018-01-19	First Edition
2018-05-17	Add instructions about brightness adjusting
2018-12-14	Modify dimensional drawing (Stainless steel frame dimension)

- **Display**

Item	Parameter	Description
Color	65K (65536) colors	16 bit color 5R6G5B
Active Area (A.A.)	162.0mm (W) ×121.5 mm (H)	1024*768
Resolution	1024*768	Support 0° /90° /180° /270° rotated display
Backlight	LED	≥10000H (Continuous working with maximum brightness, time of brightness halves)
Brightness	300nit (T10768C080_07WN)	64 levels adjustment(It's not recommend to set brightness to 1%~30% of the maximum,which may lead a flicker)
	250nit (T10768C080_07WT)	
Notice: Displaying a high contrast still screen for more than 30 minutes may result in an image blurring.Please add the screensaver to avoid.		

- **Voltage & Current**

Item	Conditions	Min	Typ	Max	Unit
Power Voltage	-	4.5	5.0	5.5	V
Operation Current (None Speaker)	VCC = 5V, Backlight on	-	600	-	mA
	VCC = 5V, Backlight off	-	180	-	mA
Recommended power supply: 5V 1A DC					

- **Reliability Test**

Item	Conditions	Min	Typ	Max	Unit
Working Temperature	60%RH at 5V voltage	-20.0	25.0	70.0	°C
Storage Temperature	-	-30.0	25.0	85.0	°C
Working Humidity	25°C	10%	60%	90%	RH
Protective Paint	-	-	None	-	-

- **Interface**

Item	Conditions	Min	Typ	Max	Unit
UART2 Baudrate	User set	7841	115200	7833600	bps
	User set(Configured in dwin os)	239	-	15667200	bps
Output Voltage (TXD)	Output 1, Iout = 1mA	3.0	3.3	-	V
	Output 0, Iout = -1mA	-	0.0	0.3	V
Input Voltage (RXD)	Input 1, Iin = 1mA	2.4	3.3	5.0	V
	Input 0, Iin = -1mA	0.0	-	0.5	V
Interface	UART2: N81, 3.3V TTL/CMOS; UART4: Optional N81/E81/O81/N82 mode, 3.3V TTL/CMOS				
Socket	10PIN_1.0mmFCC				
SD Slot	Yes (SDHC,FAT32 file format)				
Speaker	2PIN_2.0mm				

- **Memory**

Item	Parameter	Min	Typ	Max	Unit
Flash	Space of Font	-	-	64	Mbytes
	Font and audio file share the back half (32 Mbytes) of Font Space.				
	Picture Storage (256MB)	-	-	122	Pcs
	Picture Storage (1GB)	-	-	619	Pcs
RAM	Variable Storage Space	-	128	-	
Nor Flash	User database	-	320	-	Kbytes

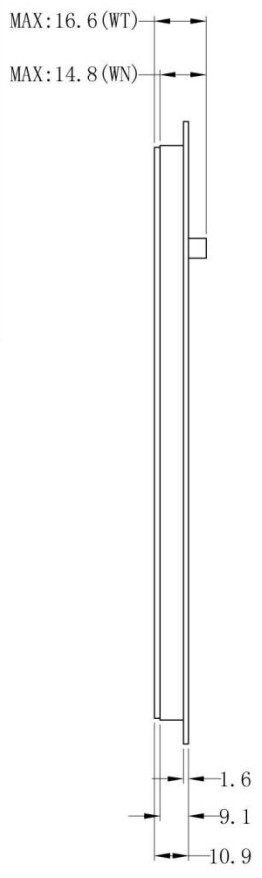
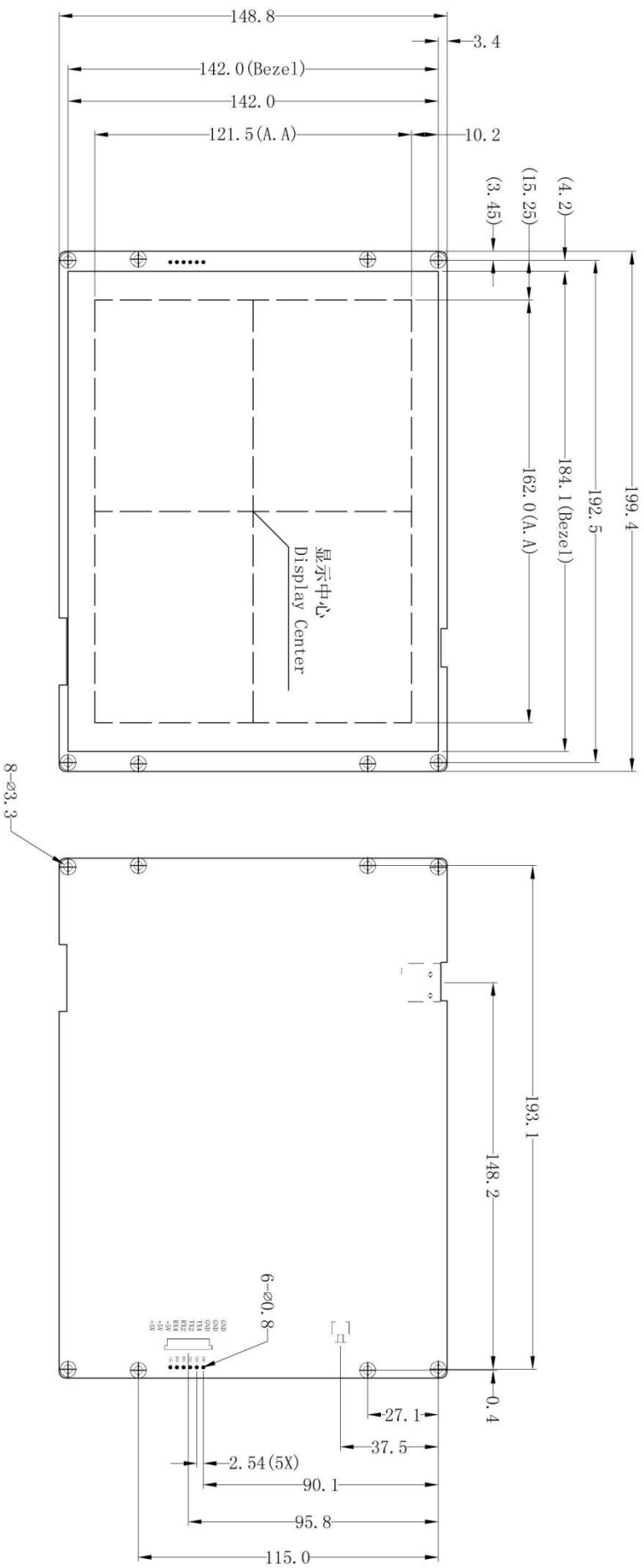
- **UI&Peripherals**

Peripherals	
UI Version	T5UID2
Peripherals	T10768C080_07WN: Speaker,Built-in RTC
	T10768C080_07WT: Speaker,Built-in RTC,capacitance touch screen

- **Packing Capacity & Dimension**

Dimension	199.4(W)×148.8 (H)×14.8 (N) / 16.6 (T) mm			
Net Weight	350g (DMT10768C080_07WN)			
	420g (DMT10768C080_07WT)			
Packing Capacity				
Model	Size	Layer	Quantity/Layer	Quantity(Pcs)
Carton1	220mm(L)×160mm(W)×47mm(H)	-	-	-
Carton2	250mm(L)×200mm(W)×80mm(H)	2	1	2
Carton3	320mm(L)×270mm(W)×80mm(H)	-	-	-
Carton4	450mm(L)×350mm(W)×300mm(H)	1	10	10
Carton5	600mm(L)×450mm(W)×300mm(H)	1	20	20

Remark:There is no extra-notice if the product design changes that do not affect performance parameters and use



1. 尺寸定位基准为定位孔
Location hole is used as position reference.
2. 未标注公差为 $\pm 0.3\text{mm}$
Unmarked Tolerance is $\pm 0.3\text{mm}$
注: 虚线标注为有效显示区域
Active area is marked in Dash lines

引脚名称	引脚定义	引脚类型	说明
GND	8, 9, 10	P	公共接地/GND
TX4	7	0	串口4输出DOU'T
TX2	6	0	串口2输出DOU'T
RX2	5	1	串口2输入DIN
RX4	4	1	串口4输入DIN
+5V	1, 2, 3	P	电源输入 / Power Input

型号	T10768C080_07WN		T10768C080_07WT	
图纸	A 4	图纸	日期	
比例		审核	日期	
单位	MM	批准	日期	